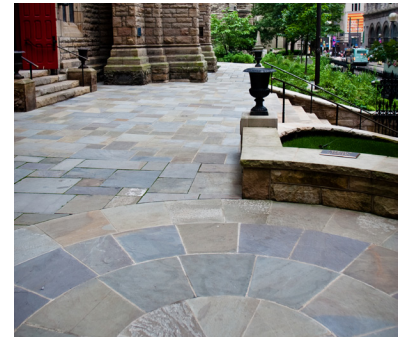
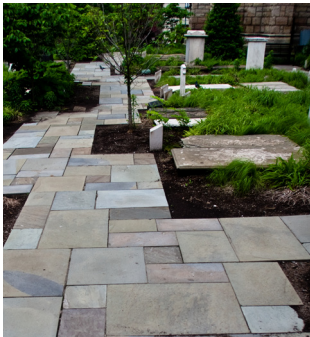


Trinity Episcopal Cathedral



Trinity Episcopal Cathedral

**328 Sixth Avenue
Pittsburgh, PA 15222**

Working with a design by Andropogon Associates, Ltd. Eisler Landscapes was honored to contribute to the historic restoration of this site in downtown Pittsburgh. Working on the church yard and building exterior, Eisler Landscapes rebuilt the stone entrances, and installed new rainwater infiltration basins, native plantings, cut stone pathways, lighting and seating. While working at a busy, occupied site is always challenging, this downtown church and burial ground was especially sensitive. A burial ground for Native Americans before becoming an Anglican cemetery in 1787, this small site contains over 4,000 burials. The current church was built in 1872. Eisler's crews worked side by side with members of the University of Pennsylvania's Historic Conservation laboratory as they completed the grave marker restoration process, and we worked hard to insure that the sacred nature of this historic site was respected throughout the construction process.